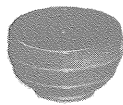
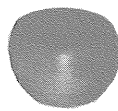


500



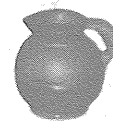
501



504



135



550



551



553



555



507

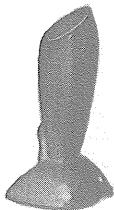


510

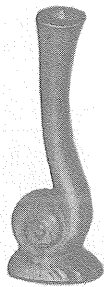
560



561



32



31



161



165



168



700



702



701



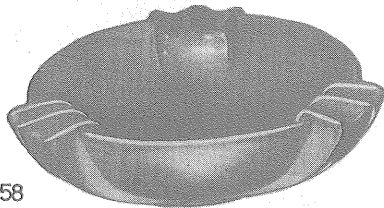
162



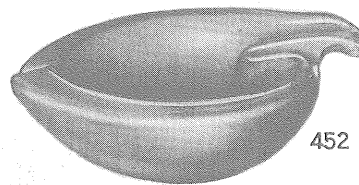
169



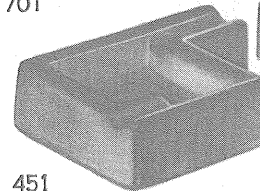
507s



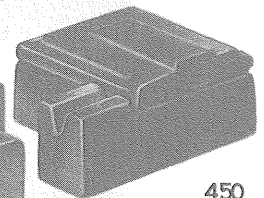
458



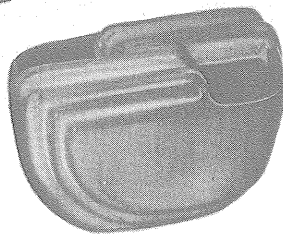
452



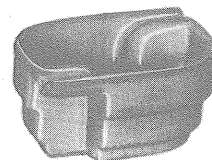
451



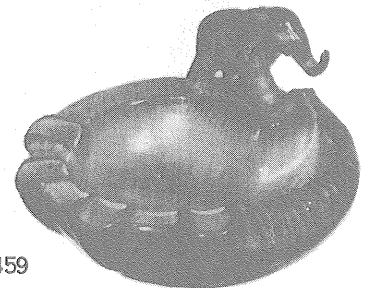
450



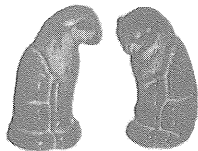
455



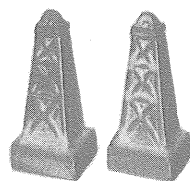
456



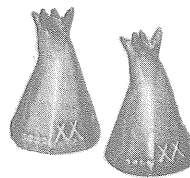
459



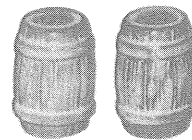
165 H



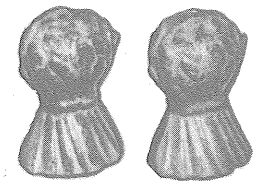
49 H



47 H



97 H



48 H

31-32—bud vases	ea.	.50
161 thru 169—miniature animals	ea.	.40
500 thru 510—miniature vases	ea.	.40
550 thru 561—miniature pitchers	ea.	.40
135—Indian wall plaque40
507S—two boots on a thong		1.00
700—flower girl vase, 6"		1.50
701—flower girl vase, 6½"		1.50
702—gardener boy, 7"		1.50
450—cigarette box		2.00
451—ash tray		1.00

452—free form ash tray	1.50
455—draft proof ash tray	1.00
456—small deep ash tray50
458—large round ash tray	1.50
459—elephant ash tray	2.00
47h—teepee salt and peppers, pair80
48h—shock of wheat salt and peppers, pair80
49h—oil derrick salt and peppers, pair80
97h—barrel salt and peppers, pair80
165h—cat salt and peppers, pair80

THIS PAGE AVAILABLE IN PRAIRIE GREEN, DESERT GOLD, ONYX BLACK, TURQUOISE BLUE, WHITE SAND, SORGHUM BROWN AND RED BUD